



# Gaps Analysis of Victim Services

**Gwynne Evans-Lomayesva, MPP (Hopi)**

Researcher, Policy Research Center, National Congress of American Indians

**Kelbie Kennedy, Esq. (Choctaw Nation of Oklahoma)**

Policy Counsel, National Congress of American Indians



## Native American Victim Assistance Programs

The BIA describes the situation this way:

*“Native American victim assistance programs currently resemble the mainstream victim assistance programs of the 1970’s: little money, few staff, no resources and a huge number of victims. Due to a lack of victim service programs in Indian Country, there often is little or no response to family members of homicide victims, sexual assault victims, child abuse victims, and others.”*

“Victim Assistance.” *Bureau of Indian Affairs*, U.S. Department of the Interior, [www.bia.gov/bia/ojs/victim-assistance](http://www.bia.gov/bia/ojs/victim-assistance).





## Objectives

- Conduct a review of victim services in Indian Country
- Identify gaps in victim services in Indian Country
- Develop a report on findings for Office for Victims of Crime, U.S. Department of Justice



## Methods

- Literature Review
- Data collection from service providers from Mapping Tool
- Existing Grant Programs Review
- Focus groups





## Methods

### Setting

Tribal Resource Mapping Tool

### Sample

Victims of Crime Service Providers

Outreach strategy – Email, open online form, conference recruitment, and cold calling tribes

### Measures

Online questionnaire regarding organization and available services



## Analysis: Preliminary Data from the Mapping Tool

Descriptive analysis: numbers and percent of those responding to selected questions from the mapping tool available today.

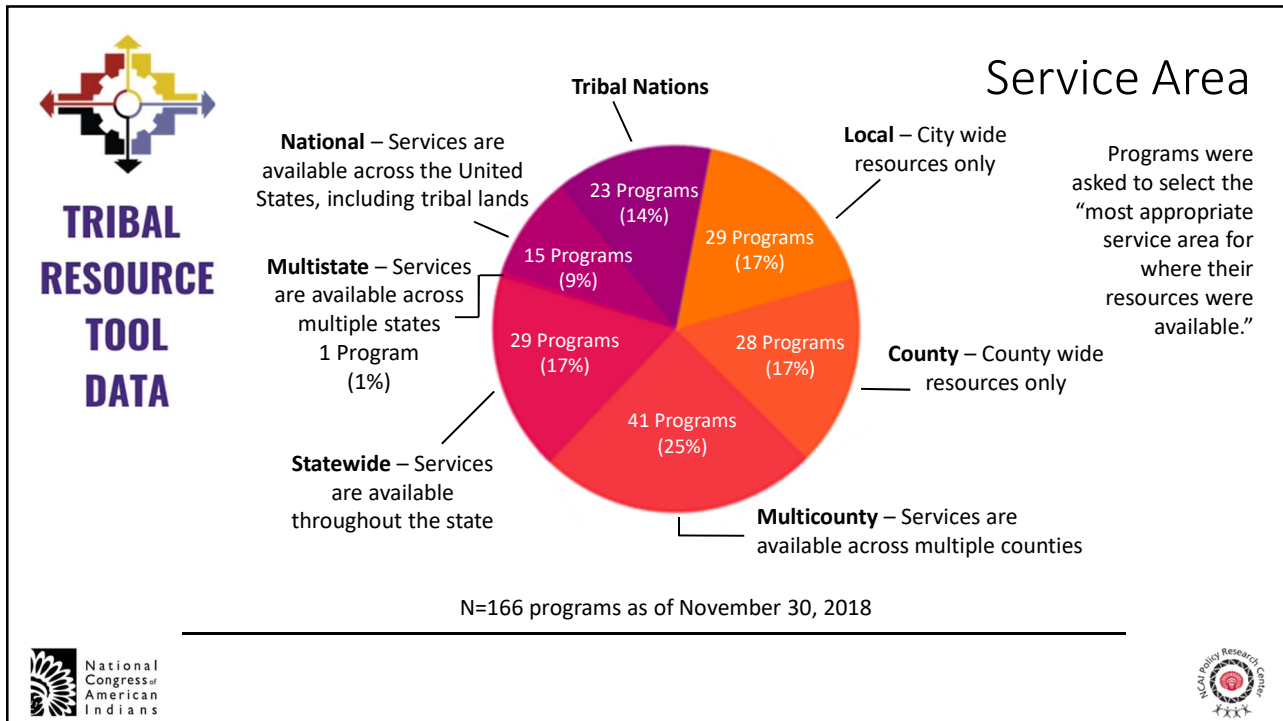
1. Service Areas
2. Populations Served
3. Crime Types Served
4. Service Types Available

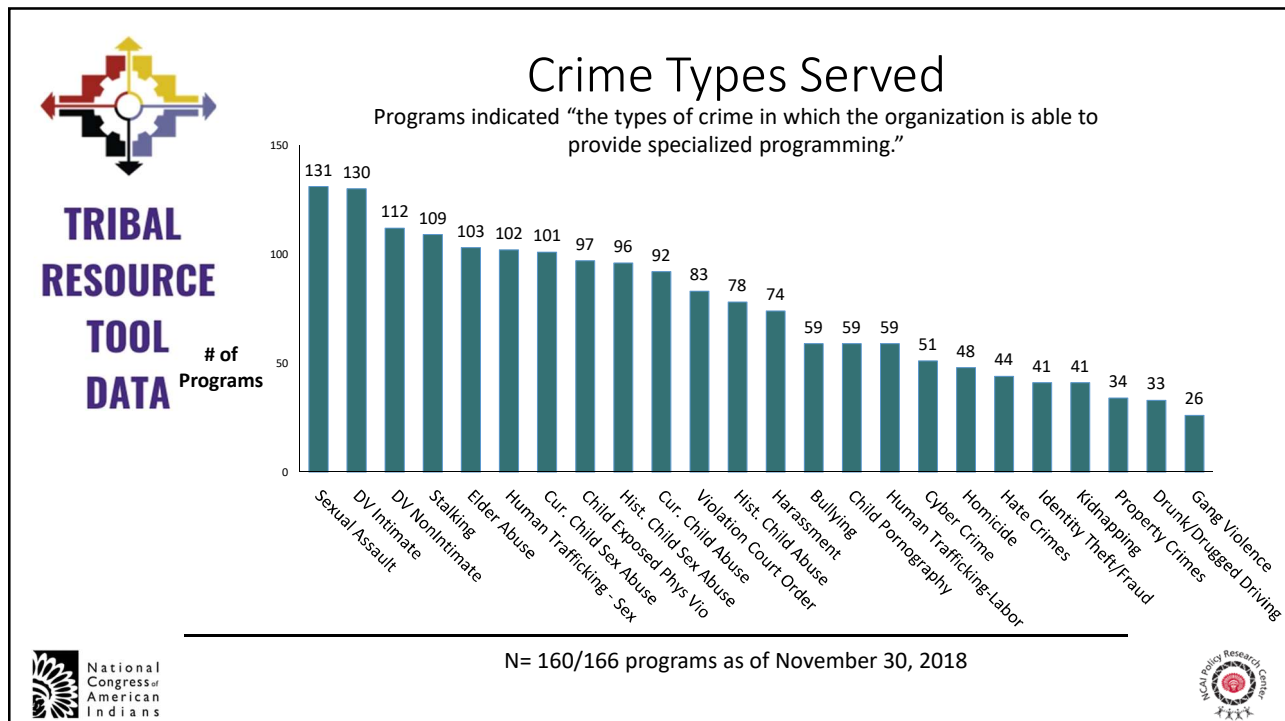
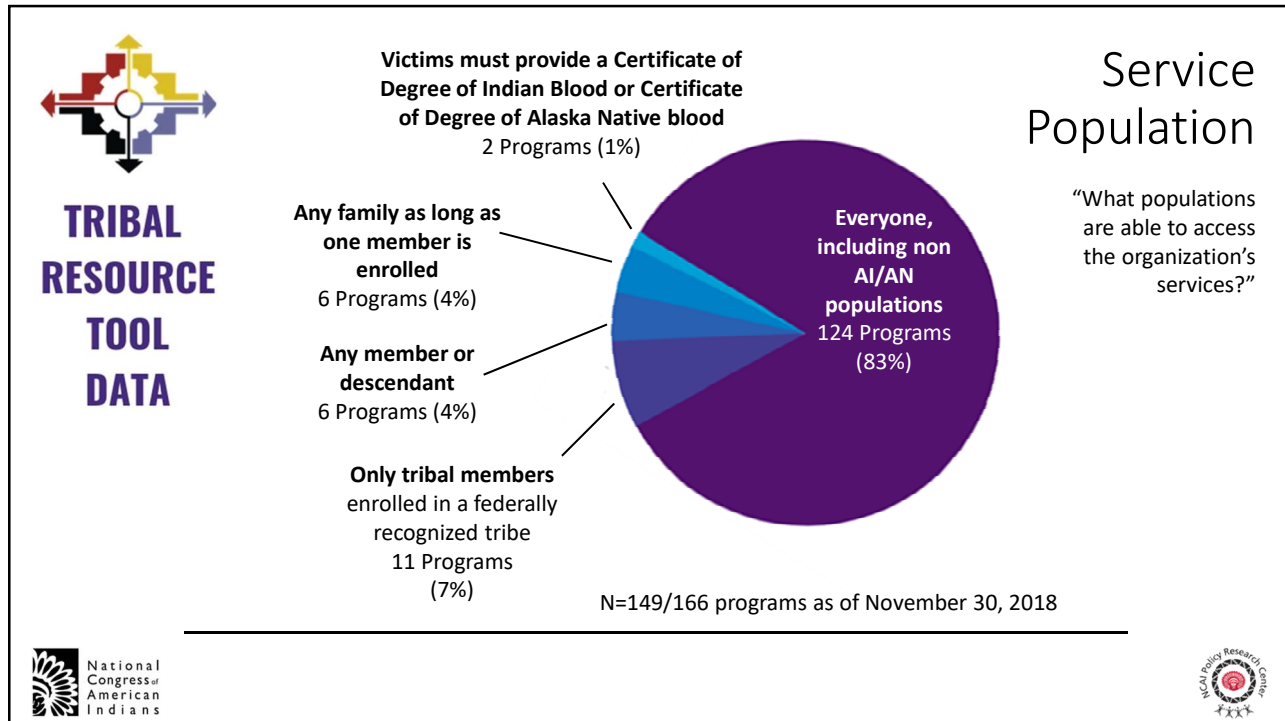


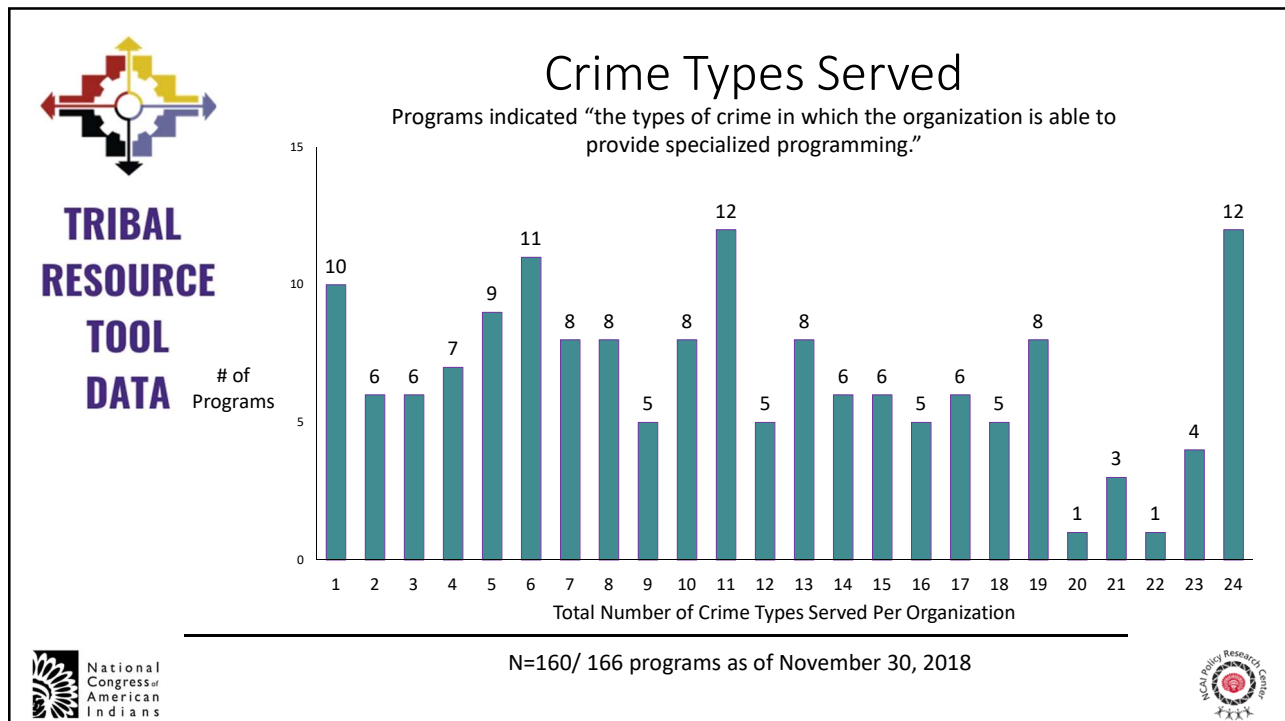
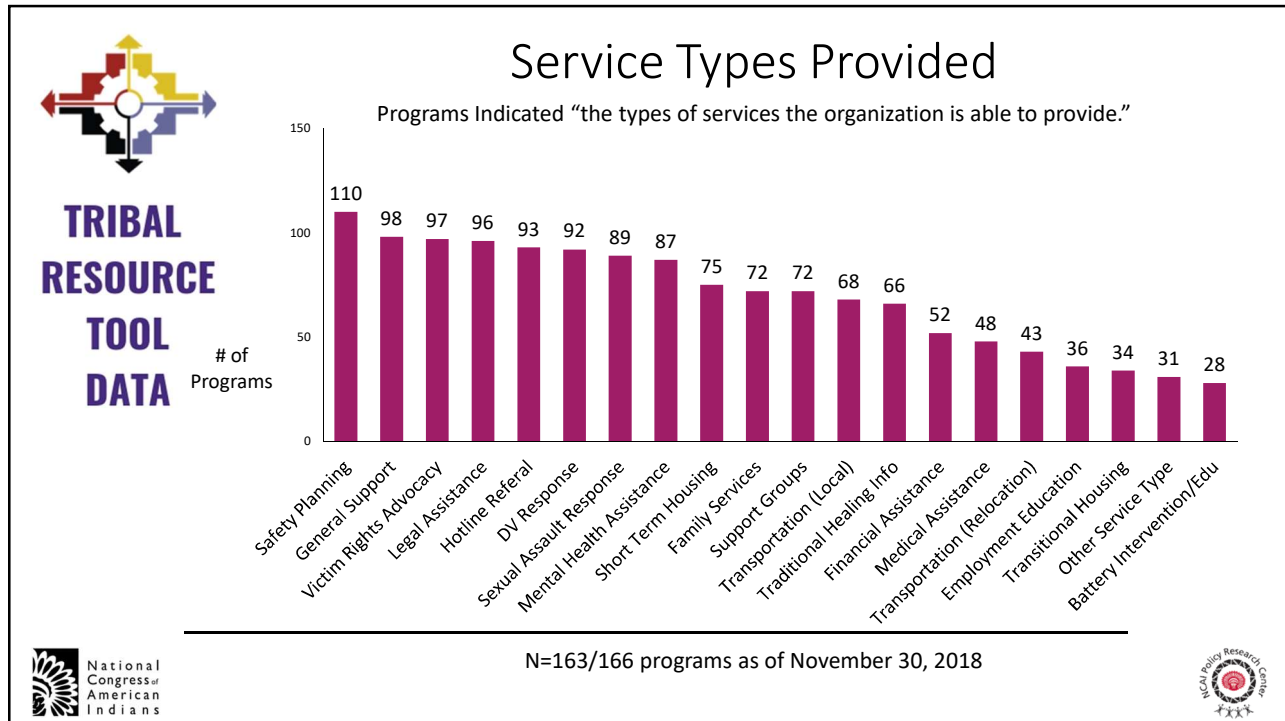


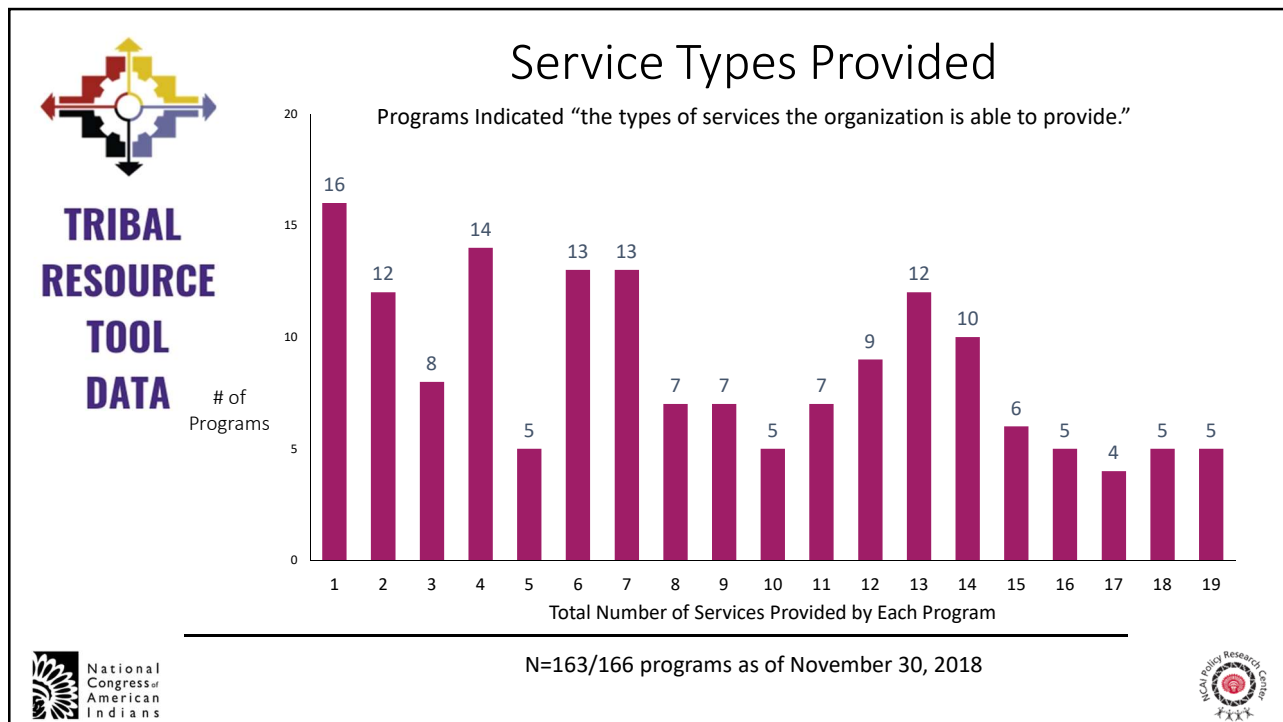
TRIBAL RESOURCE TOOL  
Resources For Survivors of Crime and Abuse

# Preliminary Results









**TRIBAL RESOURCE TOOL**  
 Resources For Survivors of Crime and Abuse

## Contact Information

**Gwynne Evans-Lomayesva, MPP (Hopi)**  
 Researcher, Policy Research Center  
 National Congress of American Indians  
[GEvans-Lomayesva@ncai.org](mailto:GEvans-Lomayesva@ncai.org)